

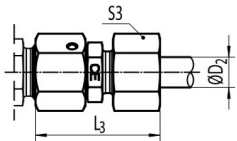
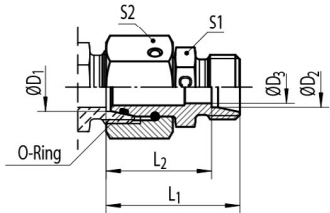


C-RED

CONE-END REDUCER WITH SWIVEL (L/LL, L, L/S) 24° Swivel (DIN EN ISO 8434-1) / 24° Tube Connection (DIN EN ISO 8434-1)



C-RED



Series	PN [bar]		ØD1 [mm]	ØD2 [mm]	ØD3 [mm]	L1 [mm]	L2 [mm]	L3 [mm]	S1 [mm]	S2 [mm]	S3 [mm]	Ordering Code*	kg/100			
	C	CF														
L/LL	100	100	6	4	2.5	28.5	24.5	34	9	14	10	C-RED 06L/04 LL OMD	1.7			
L	315	500	8	6	4.0	30.5	23.5	38	12	17	14	C-RED 08/06 L OMD	3.0			
			10	6	4.0	32.0	25.0	40	14	19	14	C-RED 10/06 L OMD	3.8			
			10	8	6.0	32.0	25.0	40	14	19	17	C-RED 10/08 L OMD	3.8			
			12	6	4.0	32.0	25.0	40	17	22	14	C-RED 12/06 L OMD	5.0			
			12	8	6.0	32.0	25.0	40	17	22	17	C-RED 12/08 L OMD	5.1			
			12	10	8.0	33.0	26.0	41	17	22	19	C-RED 12/10 L OMD	5.2			
		400	15	6	4.0	35.5	28.5	43	19	27	14	C-RED 15/06 L OMD	8.8			
			15	8	6.0	35.5	28.5	43	19	27	17	C-RED 15/08 L OMD	8.8			
			15	10	8.0	36.5	29.5	44	19	27	19	C-RED 15/10 L OMD	9.0			
			15	12	10.0	36.5	29.5	44	19	27	22	C-RED 15/12 L OMD	9.0			
			18	6	4.0	35.0	28.0	43	24	32	14	C-RED 18/06 L OMD	11.1			
			18	8	6.0	35.0	28.0	43	24	32	17	C-RED 18/08 L OMD	11.2			
			18	10	8.0	36.0	29.0	44	24	32	19	C-RED 18/10 L OMD	11.4			
			18	12	10.0	36.0	29.0	44	24	32	22	C-RED 18/12 L OMD	11.4			
			18	15	12.0	37.0	30.0	45	24	32	27	C-RED 18/15 L OMD	12.3			
			L/S			18	16	12.0	40.0	31.5	50	27	32	30	C-RED 18 L/16 S OMD	14.2
			L	160	250	22	6	4.0	39.0	32.0	47	27	36	14	C-RED 22/06 L OMD	15.5
						22	8	6.0	39.0	32.0	47	27	36	17	C-RED 22/08 L OMD	15.6
22	10	8.0				40.0	33.0	48	27	36	19	C-RED 22/10 L OMD	15.8			
22	12	10.0				40.0	33.0	48	27	36	22	C-RED 22/12 L OMD	15.8			
22	15	12.0				41.0	34.0	49	27	36	27	C-RED 22/15 L OMD	16.4			
L/S						22	16	12.0	43.0	34.5	53	27	36	30	C-RED 22 L/16 S OMD	19.3
L			22	18	15.0	41.0	33.5	50	27	36	32	C-RED 22/18 L OMD	17.7			
L/S			22	20	16.0	45.0	34.5	56	32	36	36	C-RED 22 L/20 S OMD	20.5			

*Replace the character "C" with "CF" when you require steel!
C = Stainless Steel, 1.4571 (Seal FKM) CF = Galvanized Steel Cr(VI)-free (Seal NBR)